

I MINA'TRENTAI TRES NA LIHESLATURAN GUÅHAN
2016 (SECOND) Regular Session

Bill No. 380-33 (COR)

Introduced by:

T. R. Muña Barnes

**“AN ACT TO REZONE LOT 2168, MUNICIPALITY OF
BARRIGADA, FROM AGRICULTURE “A” ZONE TO LIGHT
INDUSTRY “M1”.”**

BE IT ENACTED BY THE PEOPLE OF GUAM:

Section 1. Legislative Findings and Intent. *I Liheslaturan Guahan* finds that it is the desire of the owners of Lot 2168 to develop their *Tiyan* property to maximize its highest potential. With the passage of Public Law 31-198, all federal excess lands that were returned to the original landowners were designated as Agricultural Zone “A”. Like many other *Tiyan* properties, Lot 2168, was used for purposes other than agricultural.

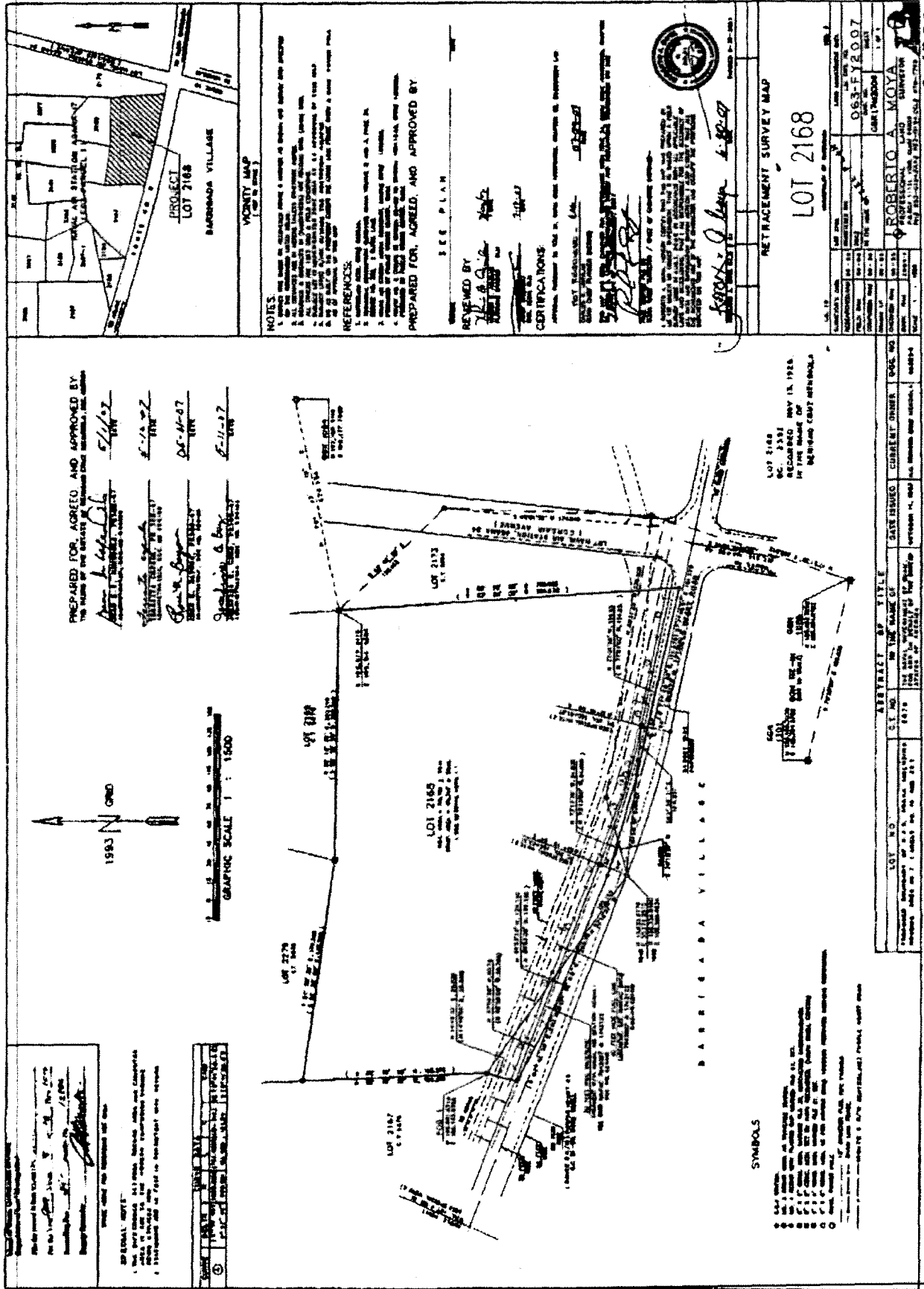
Therefore, in an effort to assist the owners to promote the highest and best use of their property, it is the intent of *I Liheslaturan Guahan* to authorize the rezoning of the lot described herein for the purposes of maintaining continued development and appropriate use of the property.

Section 2. Lot Rezoning. Notwithstanding any other provision of law, Lot 2168, containing an area of +/- 90,747 square meters, located in *Tiyan* in the municipality of *Barrigada*, as shown on Department of Land Management Drawing No. 063-FY2007 recorded under Document No. 683594 (Attachment A) is hereby rezoned from Agricultural Zone “A” to Light Industrial Zone “M1”.

Section 3. Effective Date. This Act shall take effect upon its enactment into law.

2016 OCT - 6 PM 4: 37

Attachment A of Bill No. 380-33 (cont)



PREPARED FOR, AGREED AND APPROVED BY
 THE BOARD OF THE DISTRICT OF BARRABADA, BARRABADA, BERMUDA.

[Signatures]
 Date: 11-11-27

NOTES:

1. This map was prepared from a survey of the land shown hereon.
2. The boundaries shown hereon are the boundaries of the land shown hereon.
3. The bearings and distances shown hereon are the bearings and distances of the boundaries of the land shown hereon.
4. The area of the land shown hereon is 1.1111 acres.
5. The map was prepared from a survey of the land shown hereon.
6. The map was prepared from a survey of the land shown hereon.
7. The map was prepared from a survey of the land shown hereon.
8. The map was prepared from a survey of the land shown hereon.
9. The map was prepared from a survey of the land shown hereon.
10. The map was prepared from a survey of the land shown hereon.

REFERENCES:

1. The map was prepared from a survey of the land shown hereon.

PREPARED FOR, AGREED, AND APPROVED BY

SEE PLAN

REVIEWED BY

CERTIFICATIONS

ROBERTO A. MOYA
 PROFESSIONAL LAND SURVEYOR
 No. 1111, Barrabada, Bermuda.
 Date: 11-11-27

SYMBOLS

- 1. A solid line with a dashed center line indicates a boundary line.
- 2. A solid line with a solid center line indicates a boundary line.
- 3. A solid line with a solid center line and a dashed outer line indicates a boundary line.
- 4. A solid line with a solid center line and a solid outer line indicates a boundary line.
- 5. A solid line with a solid center line and a solid outer line and a dashed outer line indicates a boundary line.
- 6. A solid line with a solid center line and a solid outer line and a solid outer line indicates a boundary line.
- 7. A solid line with a solid center line and a solid outer line and a solid outer line and a dashed outer line indicates a boundary line.
- 8. A solid line with a solid center line and a solid outer line and a solid outer line and a solid outer line indicates a boundary line.
- 9. A solid line with a solid center line and a solid outer line and a solid outer line and a solid outer line and a dashed outer line indicates a boundary line.
- 10. A solid line with a solid center line and a solid outer line and a solid outer line and a solid outer line and a solid outer line indicates a boundary line.

5-13090